

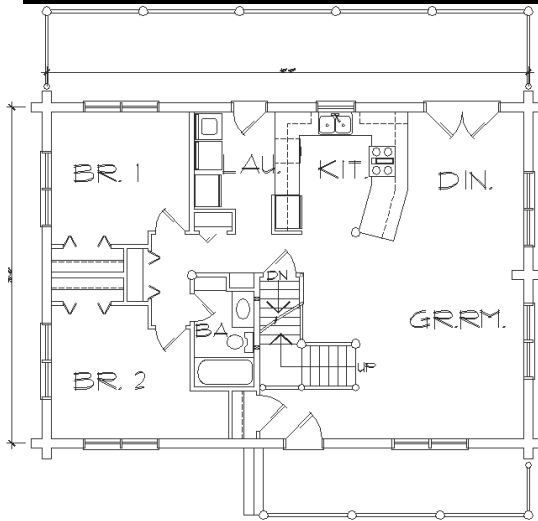
# WHISPERING PINES

**28' X 40'**

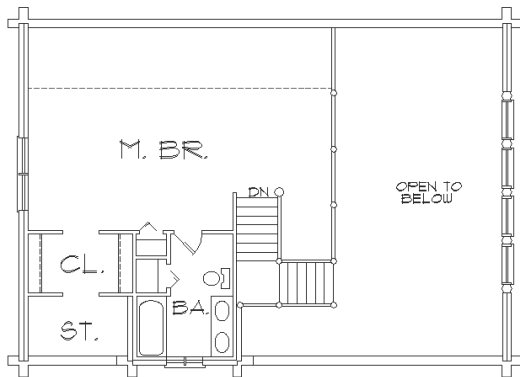
**Main Floor 1,120 Sq. Ft.**

**Loft 561 Sq. Ft.**

**Basement 1,154 Sq. Ft.**



MAIN FLOOR PLAN



LOFT PLAN

This classic cabin is versatile and economical to build. The floor plan is easily extended to 44 feet or more for a larger great room. Another option combines the bedrooms on the main floor into one master suite with a bunk-room or office in the loft. Living space can be increased by adding an attached garage and extending the loft bedroom over the garage.

# BEARS DEN LOG HOMES

605-224-4423 [www.bearsdenlog.com](http://www.bearsdenlog.com)

Log packages for the Dakotas and surrounding states

